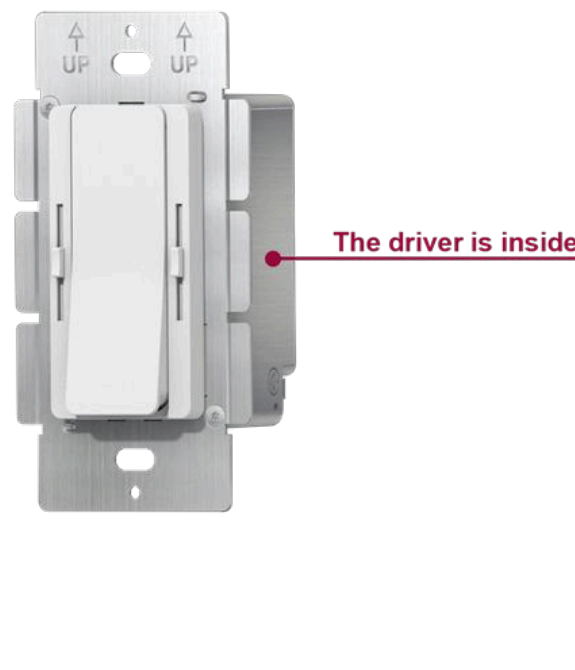


DD-CCT SERIES

LED Tunable White Dimmer + Driver Combo
 DD-24096-CCT is a LED driver and tunable white controller with dimming capability for LED lighting, offering flicker-free 20kHz PWM output and a wide 0.3%-100% dimming range. It features separate color temperature and dimming control. With a high efficiency (up to 92%), built-in active PFC, and multiple protections, it ensures reliable performance. Designed for dry and damp locations, it also operates silently via free air convection.



FEATURES

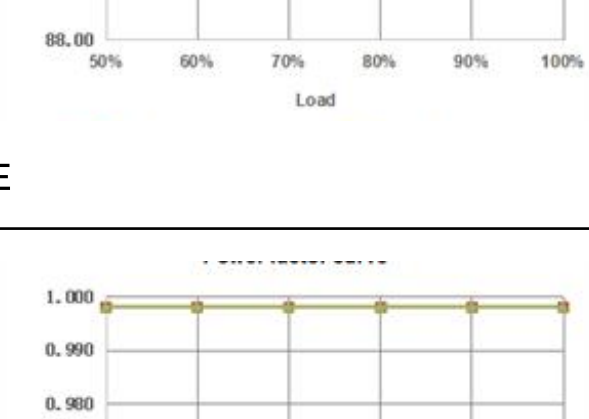
OUTPUT	Constant Voltage
INPUT RANGE	120VAC
PFC DESIGN	Built-in active PFC function
PROTECTIONS	Short circuit/ Over load/ Over temperature
HEAT DISSIPATION	Cooling by free air convection
WATERPROOF PERFORMANCE	For dry and damp locations (US)
DESIGN FEATURES	<ol style="list-style-type: none"> 1. Fine-tune output voltage can be adjusted slightly 2. Preset dimmer with on/off switch 3. 3-Way switches 4. Dimming and color temperature adjustment function. 5. Eliminated compatibility issues between drivers and switches
DIMMING RANGE	0.3%-100%
APPLICATION	Suitable for the application of LED lighting
WARRANTY	5 years warranty
OTHERS	16KHZ PWM output with dimming curve is a gamma 2.2 curve Flicker-free



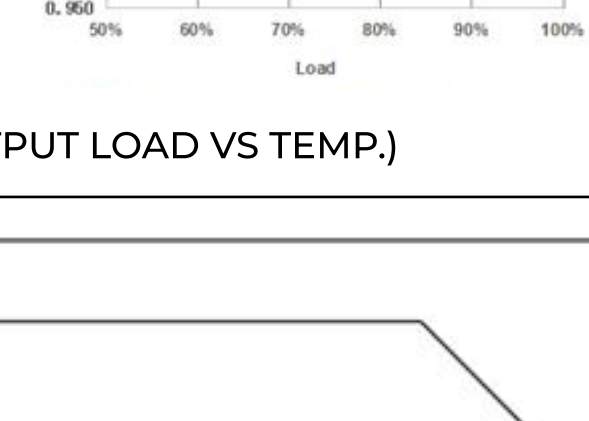
SPECIFICATIONS

Model	DD-12060-CCT	DD-24060-CCT	DD-48060-CCT
Certificates	UL / cUL / FCC / Class P / SELV / RoHS / Reach		
Output	DC Voltage	24V (24V-26V adjust by knob)	48V (48V-50V adjust by knob)
	Rated Current	4A	2A
	Rated Power	60W	60W
	Voltage Tolerance	±0.5V	
	Load Regulation	≤1%	
	Line Regulation	≤0.5%	
Input	Frequency Range	60Hz	
	Voltage Range	120V	
	Power Factor (Typ.) @ full load	0.99	
	THD (Typ.) @ full load	≤10%	
	Efficiency (Typ.) @ full load	91%	92%
	AC Current (Max.)	0.9A	0.9A
	Inrush Current (Typ.)	50A, 150us@50% Ipeak	
Protection	Leakage current	<0.5mA	
	Short Circuit	Hiccup mode, recovers automatically after fault condition is removed.	
	Over Load	≥110% Constant current mode, recovers automatically after fault condition is removed	
Environment	Over temperature	Shell surface temperature 100°C±10°C shut down o/p voltage, automatically recover after cooling	
	Working TEMP.	-40~+60°C (see below derating curve)	
	Working Humidity	20~95%RH, non-condensing	
	Storage TEMP. Humidity	-40 - +80°C, 10 - 95% RH non-condensing	
Safety & EMC	TEMP. coefficient	±0.03%/°C (0~50°C)	
	Vibration	10-500Hz, 2G 12min./1 cycle, period for 72 min. each along X,Y,Z axes	
	Safety standards	UL8750 CAN/CSA-C22.2 No.250.13 (US)	
	Withstand voltage	I/P-O/P:1.8KVAC I/P-F/G:1.8KVAC O/P-F/G:0.5KVAC (US)	
Others	Isolation resistance	I/P-O/P:100MΩ / 500VDC / 25°C / 70% RH	
	EMC EMISSION	FCC/ICES do not request this test (US)	
	Net. Weight	0.25KG	
Notes	Dimension	105*54*51mm / 4.134"x2.126"x1.996" (Inch)	
	packing		
1. All parameters if NOT specially mentioned are measured at 120VAC input, rated load and 25°C of ambient temperature. 2. To extend the driver's using life, please reduce the loading at lower input voltage.			

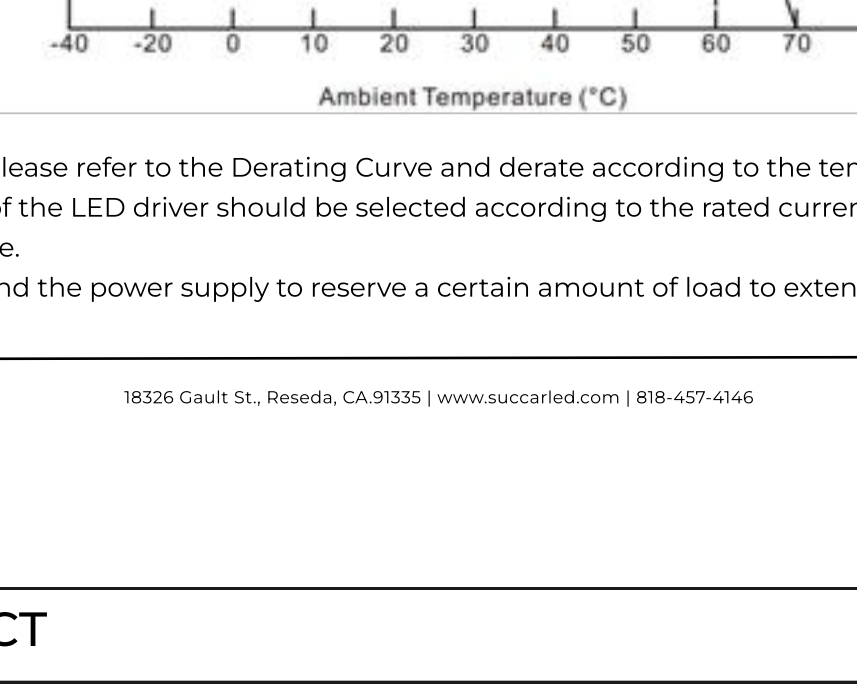
EFFICIENCY CURVE (EFFICIENCY VS OUTPUT LOAD)



POWER FACTOR CURVE

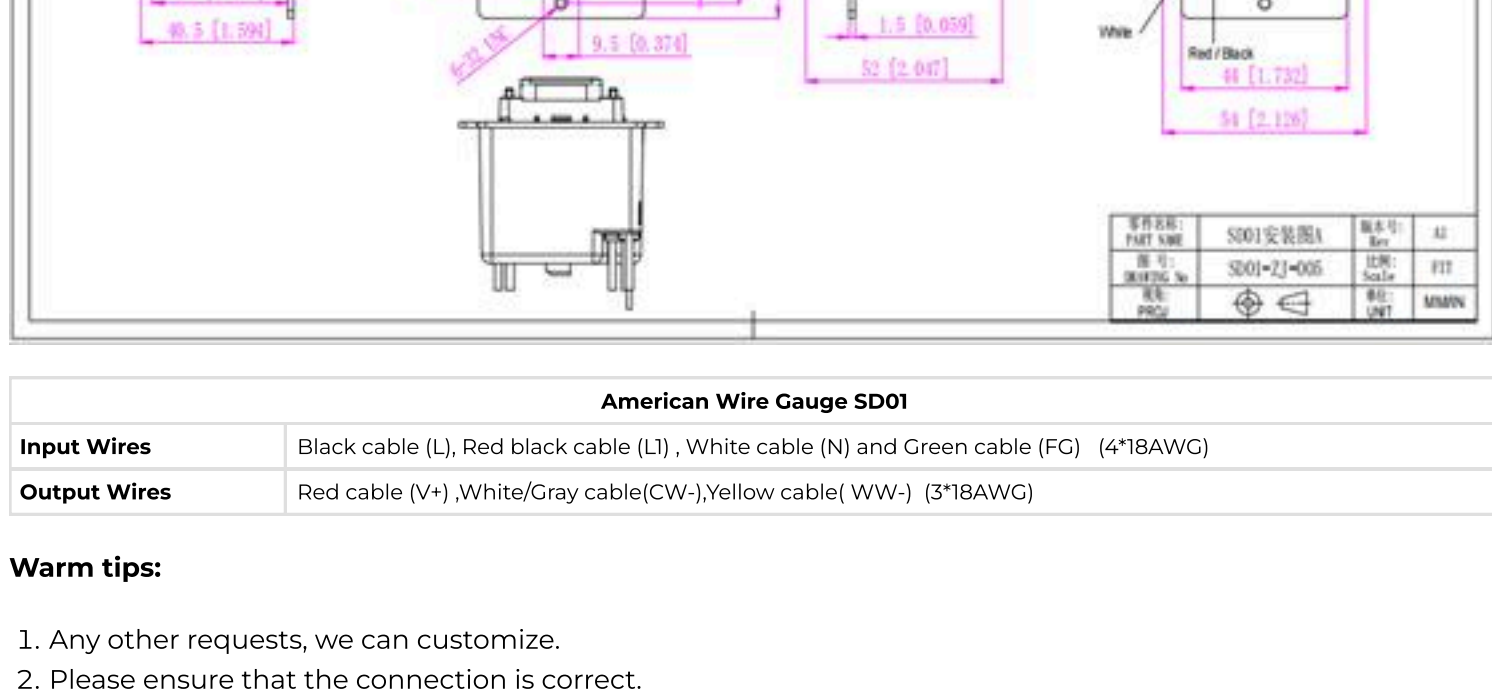


DERATING CURVE (OUTPUT LOAD VS TEMP.)



1. To extend their life, please refer to the Derating Curve and derate according to the temperature.
 2. The output current of the LED driver should be selected according to the rated current of the lamp and the ambient temperature.
- Normally, we recommend the power supply to reserve a certain amount of load to extend LED driver's life .

MECHANICAL SPECIFICATION

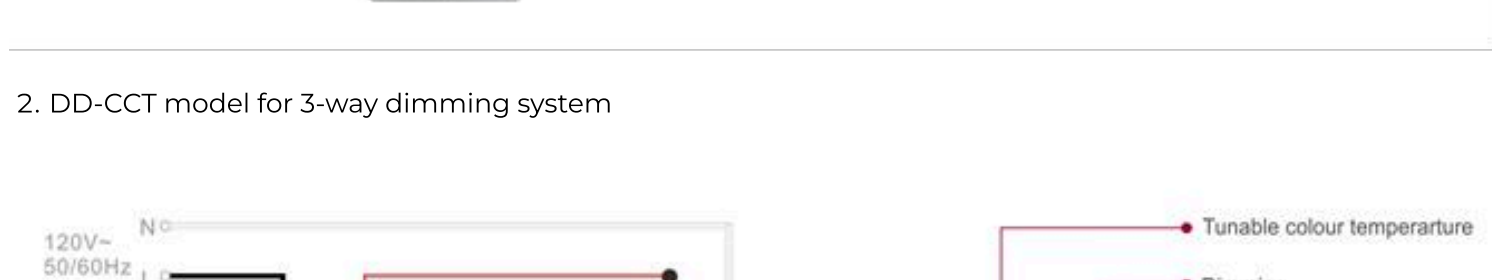


American Wire Gauge SD01	
Input Wires	Black cable (L), Red black cable (L1), White cable (N) and Green cable (FG) (4*18AWG)
Output Wires	Red cable (V+), White/Gray cable (CW-), Yellow cable (WW-) (3*18AWG)

Warm tips:

1. Any other requests, we can customize.
2. Please ensure that the connection is correct.

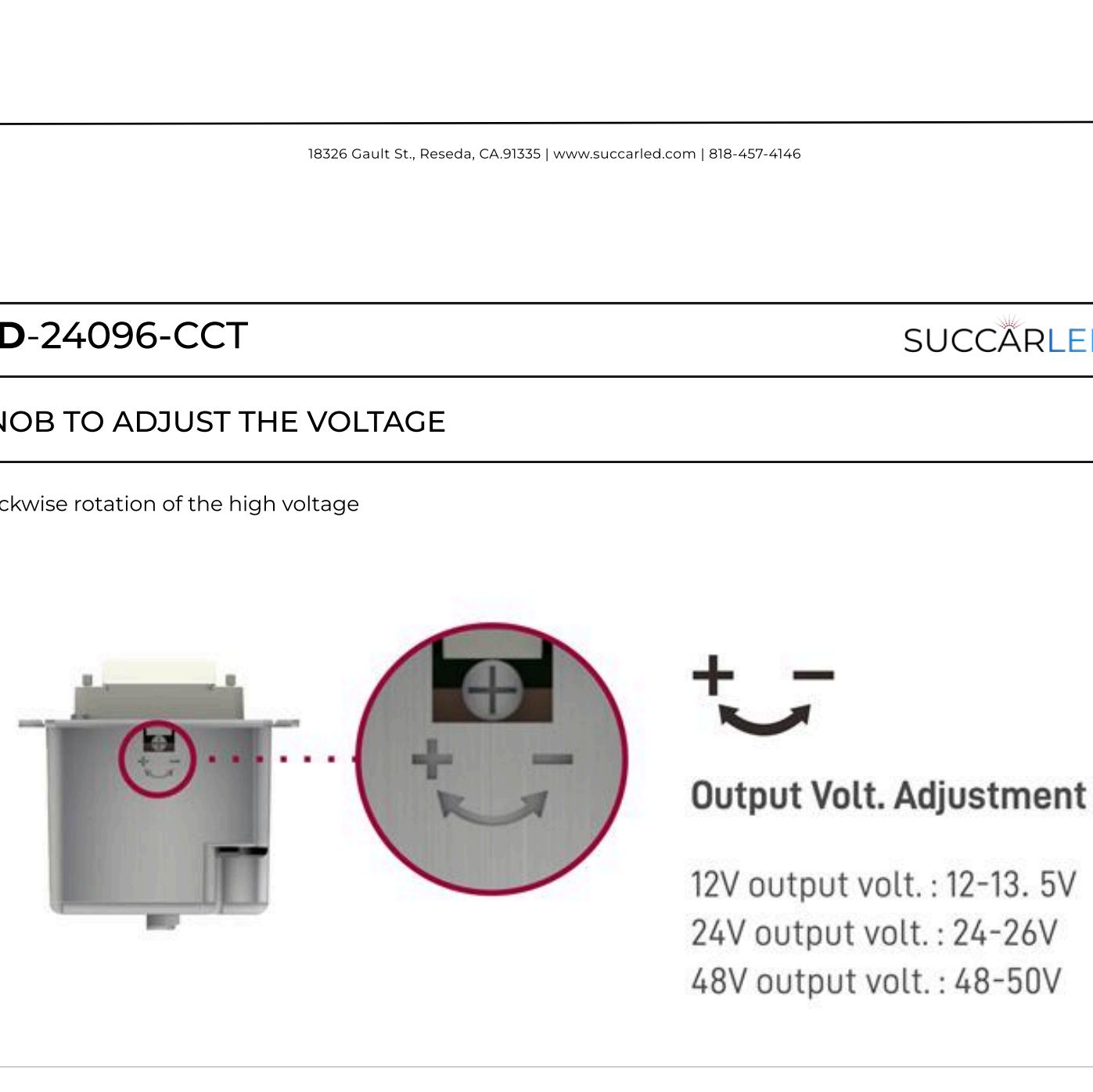
CONNECTING DIAGRAM



Note: Dimmer's panel is not replaceable.

KNOB TO ADJUST THE VOLTAGE

Clockwise rotation of the high voltage



Instruction:

1. his driver+dimmer 2 in 1 should be installed by qualified and professional person.
2. Please make sure the driver+dimmer 2 in 1 is installed with adequate ventilation around it to allow for heat dissipation.
3. Ensure that connection is correct to avoid LED light or driver+dimmer 2 in 1 be damaged.
4. If the driver+dimmer 2 in 1 cannot work normally, don't maintain privately.

Have any questions, please contact with SUCCAR LED
 Please visit our website or contact us for more information! www.succarled.com