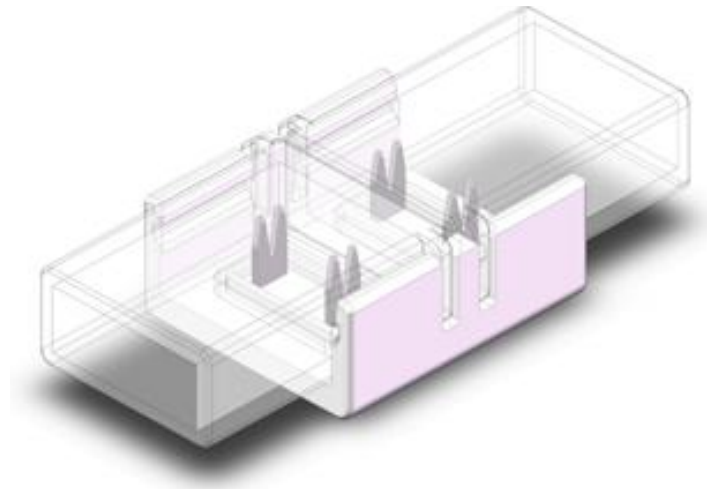


SOLID LOCK OUTDOOR COB LED STRIP CONNECTOR

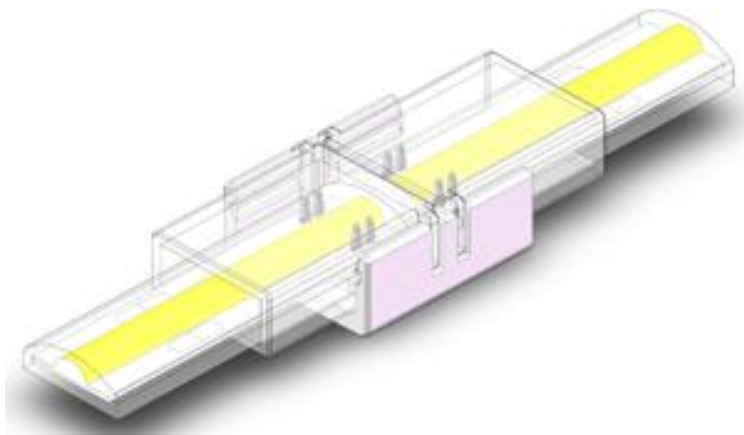
L: 35.5mm
W: 15.3mm
H: 8.5mm

SPECIFICATIONS

- Available PCB size: 8mm
- Pins: 2 Pin
- Typically Application: 2P SMD or COB IP67 IP68 SILICON TUBE WATERPROOF flexible led strip



APPLICATION



*1 = Custom length per FT.