

TDJ SERIES 96W

TDJ SERIES indoor/outdoor drivers are highly efficient, stable with smooth dimming capability compatible with most TRIAC, ELV, MLV, reverse and forward phase dimmers, and on/off switches. These drivers are phased allowing them to be loaded to maximum wattage capacity.



FEATURES

DIMMING FUNCTION	Electronic Transformer Triac/ ELV/ MLV dimming
DIMMING RANGE	0-100%
WATERPROOF PERFORMANCE	For dry and damp locations   Wet location
INPUT	120VAC
THD	THD<20%@120V Max. load
OUTPUT TYPE	Constant voltage
SMALL SIZE	126.4x80x40.4 mm / 4.97x3.15x1.59 inch(L*W*H)
LOADING	Ultra-low load requirements: Operates flawlessly at 20%-100% load.
PROTECTION	Short circuit / over load
COMPATIBILITY	Compatible with popular dimmers in the market, Lutron-CL, Diva series and so on.
APPLICATION	<ul style="list-style-type: none"> <li>LED strip/ LED tape/ LED module</li> <li>Residential Lighting</li> <li>Commercial Lighting</li> </ul>
WARRANTY	5 years warranty



TR24096TDJ

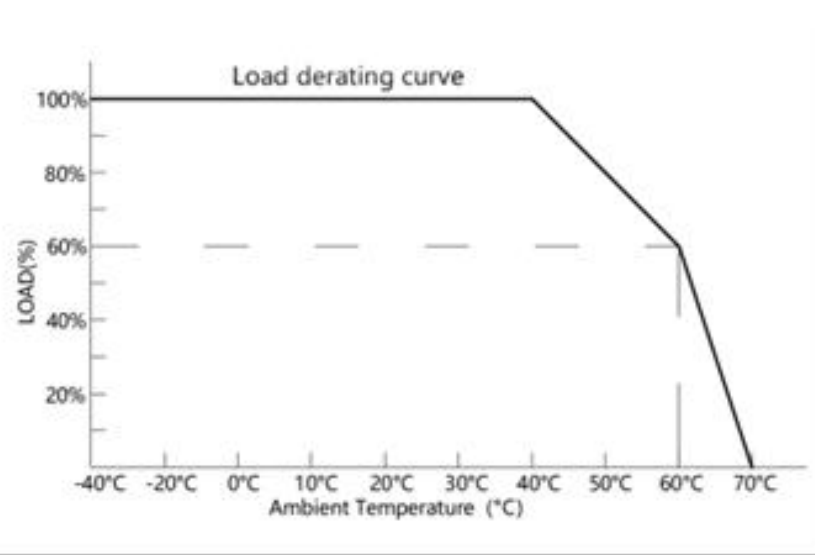
SPECIFICATIONS

<b>Model</b>	<b>TR24096TDJ</b>	
<b>Certificate</b>	UL / FCC / ICES-005 / Class P / Class 2 / TYPE HL / SELV / ROHS / REACH	
<b>Output</b>	DC Voltage	24V
	Voltage Tolerance	±1.5V
	Rated current	4A
	Rated power	96W
<b>Input</b>	Voltage Range	120V
	Frequency Range	47-63Hz
	Power Factor(typ.)	0.94@120VAC
	Total Harmonic Distortion	THD< 20%(@100% load)
	Efficiency(Typ.)	88%@120VAC
	AC Current(Typ.)	0.93A
	Leakage Current	<0.5mA/ 120VAC
<b>Protection</b>	Short Circuit	Hiccup mode, recovers automatically after fault condition is removed.
	Over Load	Hiccup mode, recovers automatically after fault condition is removed.
<b>Environment</b>	Working Temp.	Tc =-40 ~ +60 (see below derating curve)
	Working humidity	20 ~ 95% RH non-condensing
	Storage temp., Humidity	-40 ~ +90, 10 ~ 95% RH
	Temp .coefficient	±0.03%/°C (0~50°C)
<b>Safety &amp; EMC</b>	Vibration	10~500Hz, 5G 10min./1 cycle,period for 60min. each along X,Y,Z axes
	Safety standards	UL8750; CAN/CSA-C22.2 No.250.13
	Withstand voltage	I/P-O/P:1.88KVAC
	EMC Immunity	FCC/ICES do not request this test (US)
<b>Others</b>	EMC Emission	FCC Part15 Subpart B; ANSI C63.4a-2017; ICES-005 Issue 5 (US)
	Weight	0.35kg
	Dimension	See Mechanical Specification
	Packing	36*24*19 cm (20PCS/CTN )

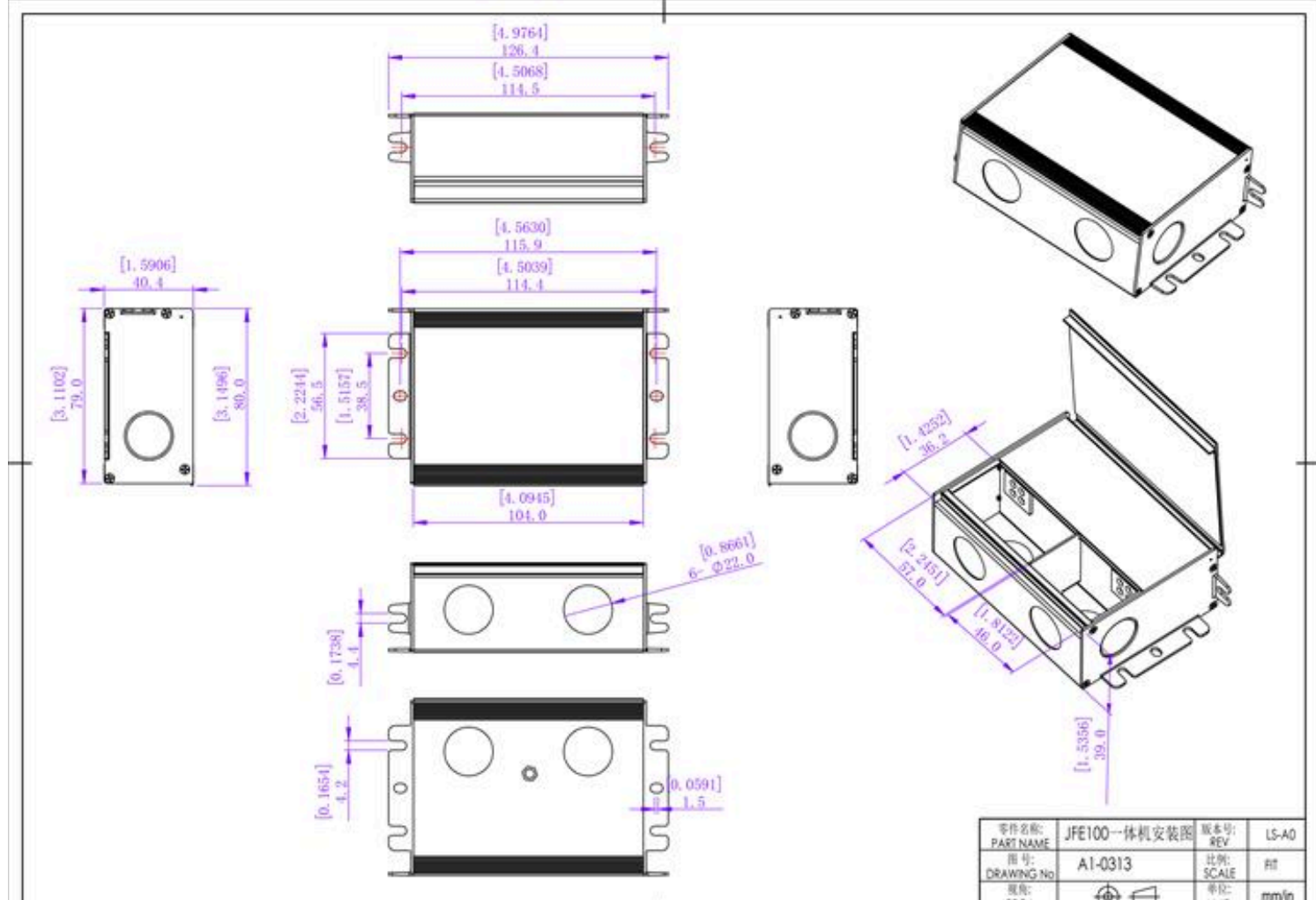
TR24096TDJ

DERATING CURVE

To extend their life, please refer to the Derating Curve and derate according to the temperature.

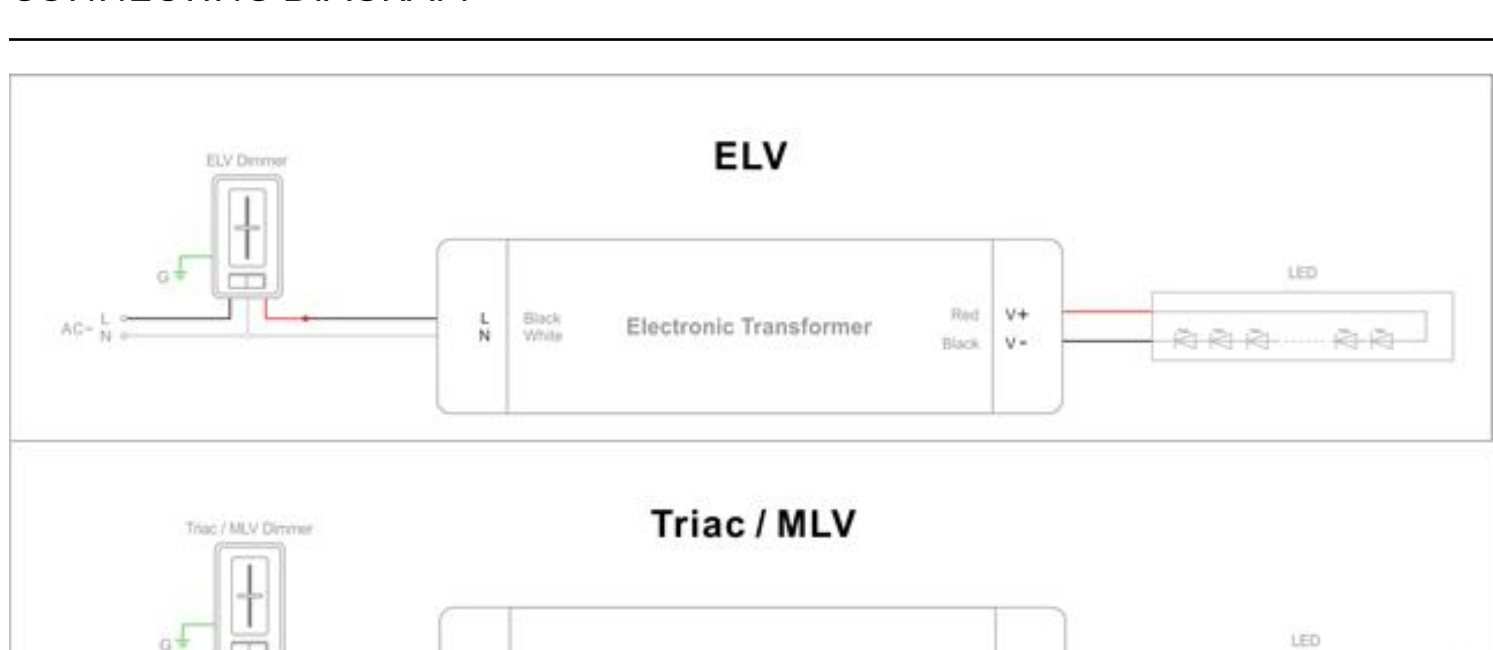


MECHANICAL SPECIFICATION



TR24096TDJ

CONNECTING DIAGRAM



Warm tips:

All Electronic Transformer meet the harmonic emissions requirements of ANSI C82.77-10.

Instruction

1. This driver should be installed by qualified and professional person.
2. Please make sure the driver is installed with adequate ventilation around it to allow for heat dissipation.
3. Ensure that wiring is correct before test in order to avoid light and power supply damage.
4. If driver Cannot work normally, don't maintain privately.

Have any questions, please contact SUCCARLED.

Please visit our website or contact us for more information! [www.SUCCARLED.COM](http://www.SUCCARLED.COM)