


## 2.4GHZ GATEWAY

- An upgraded version of WL-Box1
- Compatible with Mi-Light and MiBoxer 2.4GHz RF series product
- Smartphone app control
- Support Third Party Voice Control

## PRODUCT PARAMETERS

PRODUCT NAME	2.4GHz Gateway
MODEL NO.	WL-Box2
INPUT	DC5V/500mA (Type-C)
TRANSMITTING POWER	6dBm
RF	2.4GHz
RF CONTROL DISTANCE	30m
WORKING TEMPERATURE	-10~40°C
WIRELESS TECHNOLOGY	WiFi-IEEE 802.11b/g/n 2.4GHz

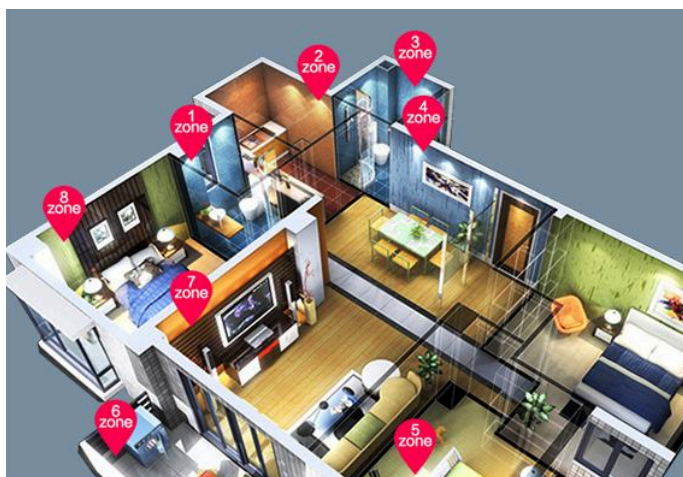


-  100 ZONES CONTROL
-  GROUP TIMER SWITCH
-  DO NOT DISTURB ON/OFF
-  TURN ON/OFF INDICATOR LIGHT
-  COPY ANOTHER PAIRED REMOTE



## 2.4GHZ GATEWAY

Support "Tuya Smart" app remote control Support third party voice control

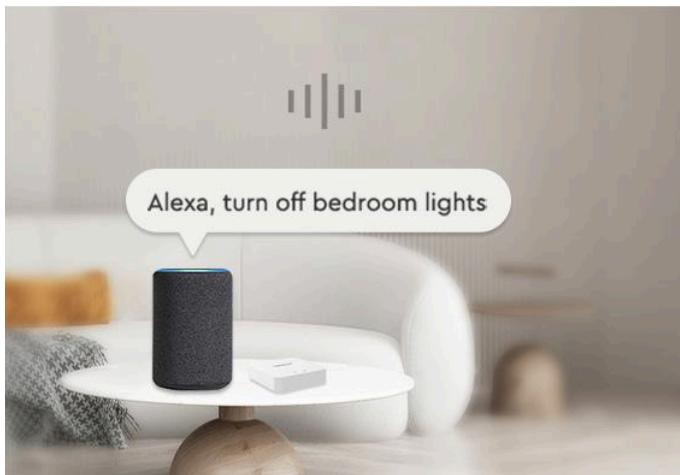
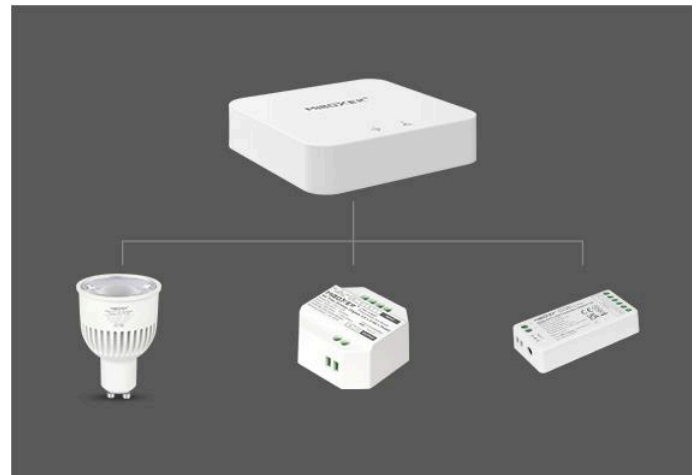


### APP REMOTE CONTROL ALL GROUP DEVICES

100 zones can be controlled individually; Custom edit zone name (Zone1-Zone16)

## COMPATIBLE WITH MIBOXER SERIES 2.4GHZ PRODUCTS

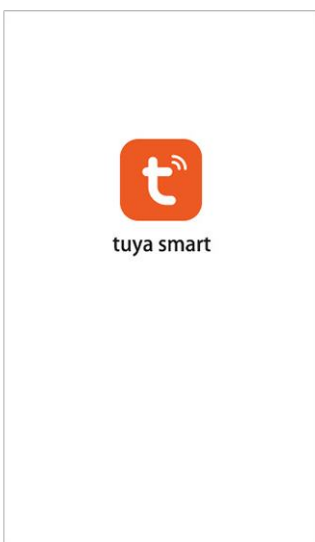
This MiBoxer gateway can be used with 2.4GHz lamps, controllers, triac and other devices to experience more functions.



## SUPPORT THIRD PARTY VOICE CONTROL

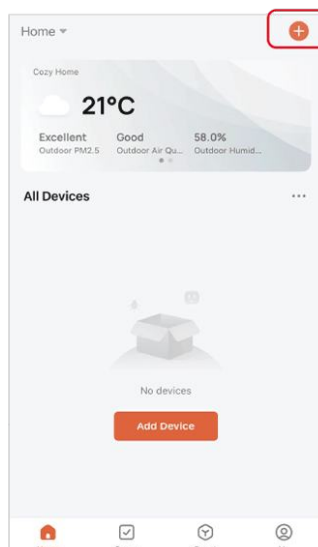


## CONNECTION STEPS



### STEP 1

Download "Tuya Smart" app



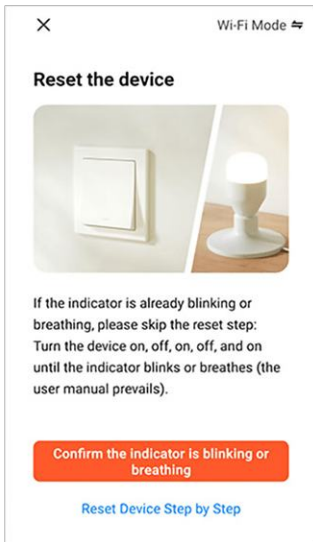
### STEP 2

On the home page, touch " + " icon in the upper right corner



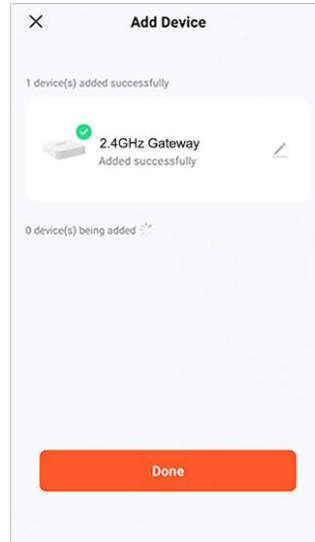
### STEP 3

Touch "Lighting" and select "Light Source (BLE+Wi-Fi)"



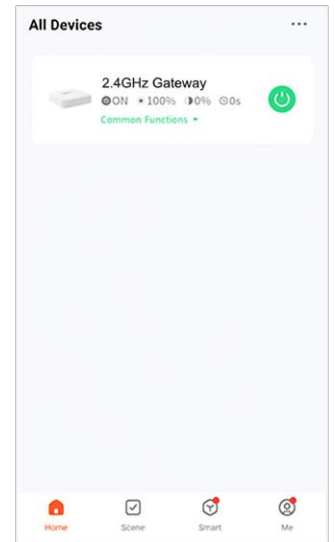
## STEP 4

The gateway indicator flashes red, if not, press and hold the " SET " button for 3 seconds



## STEP 5

The gateway completes the match, touch "Done"



## STEP 6

Match the code with the device, smart control